



恒忻企業股份有限公司(EASY MAGNET CORP.)

## SPECIFICATION FOR APPROVAL

CUSTOMER	:	
PART NO.	:	
REV. NO.	:	
DESCRIPTION	:	Common Mode Choke Coil
EMC NO.	:	NH SERIES
REV. NO.	:	1.0
DOCUMENT NO.	:	
ISSUE DATE	:	2007.01.25

CUSTOMER SIGNATURE		
APPROVED	CHECKED	INSPECTED

**CHINA (DONG GUAN) FACTORY:**

No.8 INDUSTRIAL NORTH WAY,178  
INDUSTRIAL AREA,ZUFOLING ADMINISTRIVE,  
TANGXIA,DONG GUAN,KWANG TUNG  
TEL:86-769-7915567~9  
FAX:86-769-7915566

**TAIWAN OFFICE:**

12F-7,No.79,SEC.1,HSIN TAI WU RD.  
HSI-CHIN,TAIPEI HSIEN,TAIWAN  
TEL:886-2-2698-9699  
FAX:886-2-2698-9399  
<http://www.easymagnet.com.tw>

**CHINA (SU ZHOU) FACTORY:**

No.2088 PANGJING ROAD,ECONOMIC  
DEVELOPMENT ZONE,WUJIANG CITY,  
JIANGSU  
TEL:86-512-63430335  
FAX:86-512-63430368

APPROVED	CHECKED	PREPARED
<i>FRANK</i>	<i>LINDA</i>	彭繼湘

**SAMPLE MADE IN CHINA**

*Samples meet RoHS and  
Lead-free requirement*



# CHIP COMMON MODE CHOKE COIL NH SERIES

## Introduction

This specification is applicable to chip type wire wounded common mode chokes. The NH series are widely used in notebook, PC, USB, HUB, etc. The wire wound features advance in lower DC resistance and higher current tolerance, and much stable performance.

## Features

- \* Operating temperature  $-40^{\circ}\text{C}$  to  $+85^{\circ}\text{C}$
- \* Excellent solderability and resistance to soldering heat.
- \* Suitable for flow and reflow soldering.
- \* Good dimensions, high reliability, and easy surface mount assembly.

## Part Number

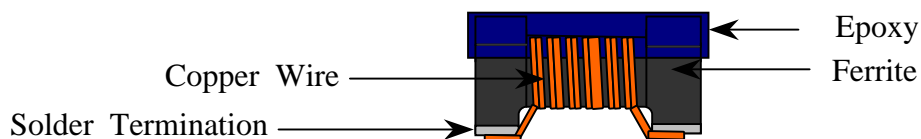
NH    0805    -    900    S    □□  
 (1)    (2)                      (3)    (4)    (5)

- (1) Chip Common Mode Choke Coil
- (2) Chip Size

CODE	L	W	H	UNIT
EIA	0.079	0.047	0.047	Inch
JIS	2.00	1.20	1.20	mm

- (3) Typical Impedance at 100MHz  
     900 =  $90\Omega$                       161 =  $160\Omega$
- (4) Tolerance  
     S =  $\pm 25\%$
- (5) Internal Code

## Material Structure

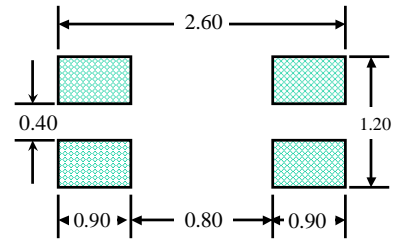
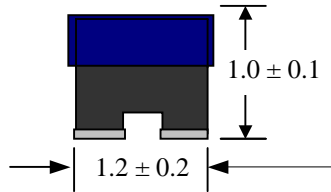
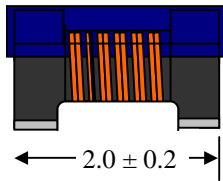


## Reliability Specification

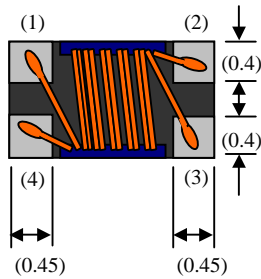
As attached.

**COMMON MODE CHOKE  
WIRE WOUND TYPE**

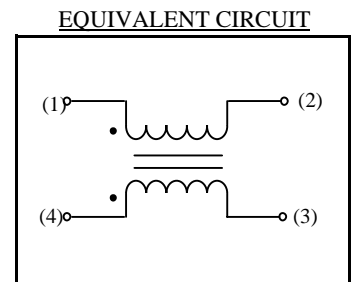
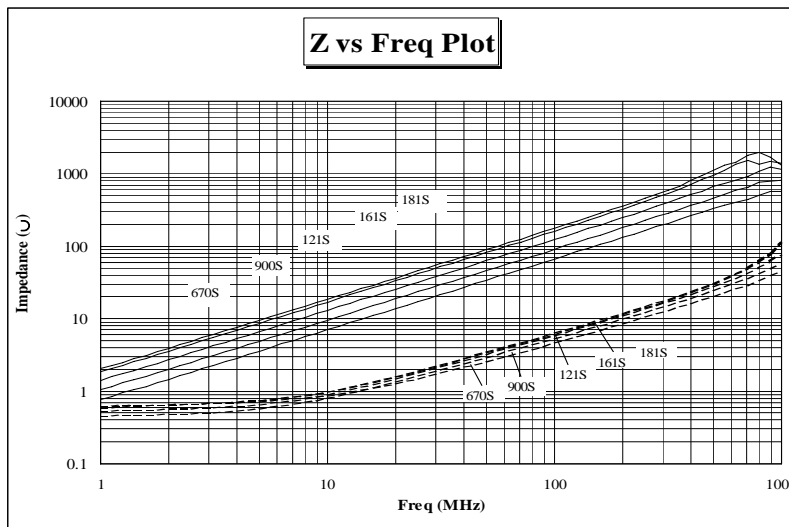
**NH 0805 SERIES**



RECOMMENDED PCB PATTERN



Remark : : Electrode  
( ) : Reference Value  
Unit: m/m



No Polarity

**Specification**

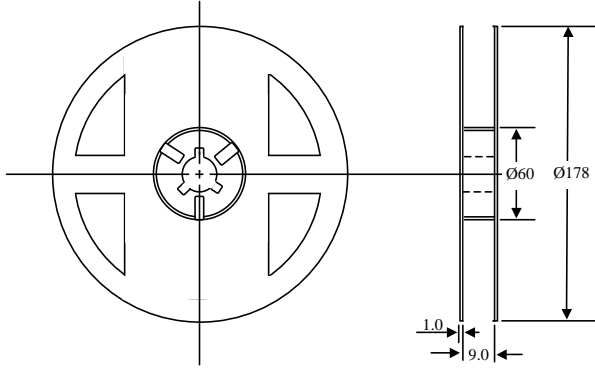
Part Number	Common Mode <sup>1</sup> Impedance (Ω) at 100MHz	Rated Voltage V (DC)	Withstanding Voltage V (DC)	Rated <sup>2</sup> Current max (mA)	DC Resistance max (Ω)	Insulation Resistance min (MΩ)
NH0805-670S	67	50	125	330	0.35	10
NH0805-900S	90	50	125	300	0.40	10
NH0805-121S	120	50	125	280	0.45	10
NH0805-181S	180	50	125	250	0.50	10

1. Impedance is measured in HP4287A.  
2. For 15 °C rise.

# Packaging Information

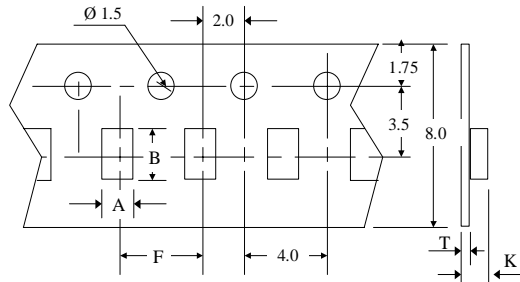
## Packing Quantity

Type	Pcs / Reel
NH0805	2,000

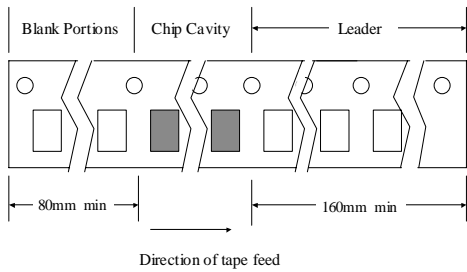


## Dimensions (unit: m/m)

Type	Chip Cavity		Insert Pitch	Tape Thickness	
	A	B	F	K	T
Tolerance	± 0.10mm				
NH0805	1.48	2.33	4.00	1.08	0.23



  
 TAPE DIRECTION



## Top Tape Strength

The top tape requires a peel-off force of 0.2 to 0.7N in the direction of the arrow as illustrated below.

